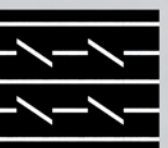
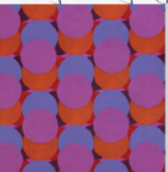
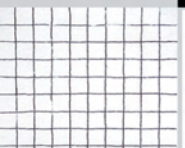
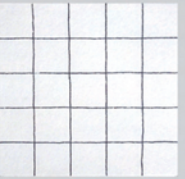
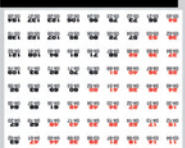
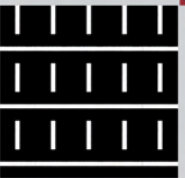
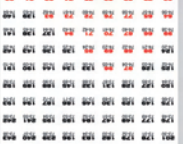
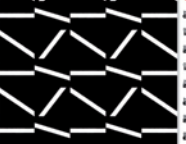
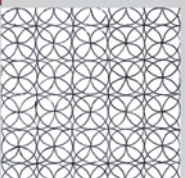
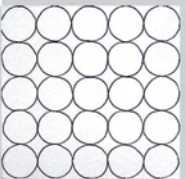
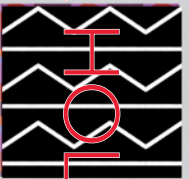




AHOLI-CITY #04



Eröffnung
Sa 31.7.2010 16 Uhr

Begrüßung
Ellinor Euler
Detlef Mallwitz

Ausstellung
1.8. - 19.9.2010

Öffnungszeiten
Fr + Sa 14 - 19 Uhr u. n.V.
Schaufenster rund um die Uhr

Happy Talk mit E. Euler + D. Mallwitz
Fr 17.9.2010 19 Uhr
im A trans Pavilion

Opening
Sat July 31, 2010 4 PM

Welcome
Hermann Bayer
Isolde Nagel

Exhibition
1.8. - 19.9.2010

Opening Hours
Fri + Sat 2 - 7 PM and by appointment
Shopwindow 24 hours

Happy Talk with E. Euler + D. Mallwitz
Fri 17.9.2010 7 PM
at A trans Pavilion

A trans Pavilion curated by Isolde Nagel
Die Hackeschen Höfe | Hof 3 | Rosenthalerstr. 40/41 | 10178 Berlin
www.atrans.org | in@atrans.org

Ellinor Euler + Detlef Mallwitz

zwei + zwei = eins Holistic dualism - A visual dialogue

Nach dem Prinzip des holistischen Dualismus ($2+2=1$) entsteht im Dialog der beiden Künstler eine zufällige Anordnung von Bildern. *Ellinor Eulers* geometrische Untersuchungen der *Blume des Lebens* mischen sich mit Zahlen- und Zeichenbildern von *Detlef Mallwitz*. Reliefs und kleine Skulpturen transformieren Oberflächen und Raumstruktur des Pavillons.

Both artists initiate a dialogue according to the principle of holistic dualism ($2+2=1$). The fusion of images are experienced as random: geometrical investigations of the Flower of Life by Ellinor Euler are combined with number images and icon images by Detlef Mallwitz. Sculptural elements and reliefs transform the surfaces and spatial structure of the pavilion.

www.ellinoreuler.de | www.detlef-mallwitz.de

Herzlichen Dank an /
Sincerest thanks to

anatre  MLP
Hanleys oxymoron


HACKESCHER
HOF

